

# **Annual Skipper Orientation**

**Sprite - Pearson 30**

**June 14, 2020**

**Pete Raynor – Boat Manager**

# General Information:

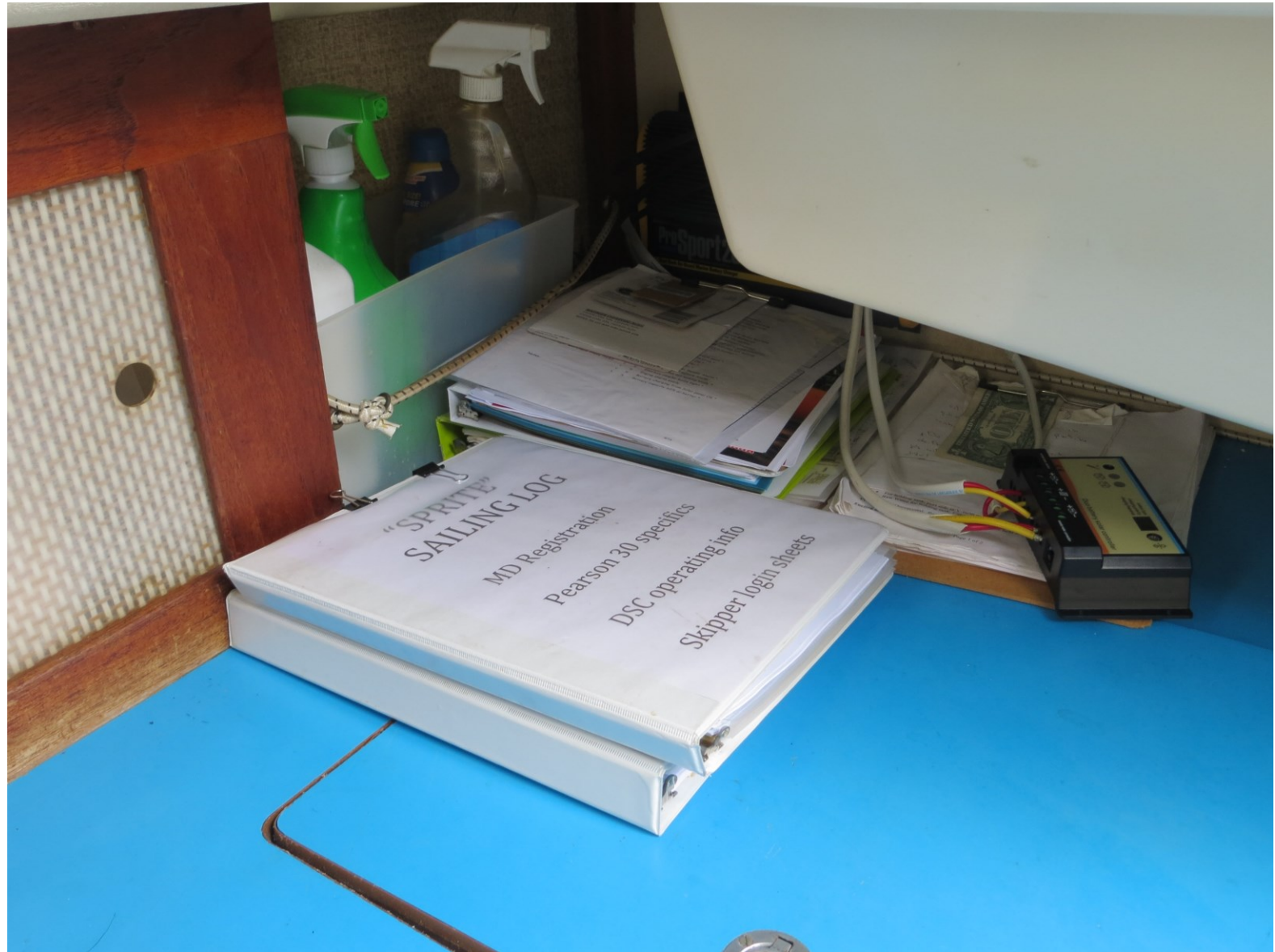
- Hull type – Fin w/spade rudder
- Rigging Type – Masthead Sloop
- LOA 29.8 ft / LWL 25.0 ft
- Mast Height from DWL 42.25 ft
- Beam – 9.5 ft / Draft 5.0 ft
- Aux Power- Universal M-25 Diesel – 22hp
- Fuel Tank - 20 gals
- Water Tank – 22 gals
- Sprite - Constructed 1974



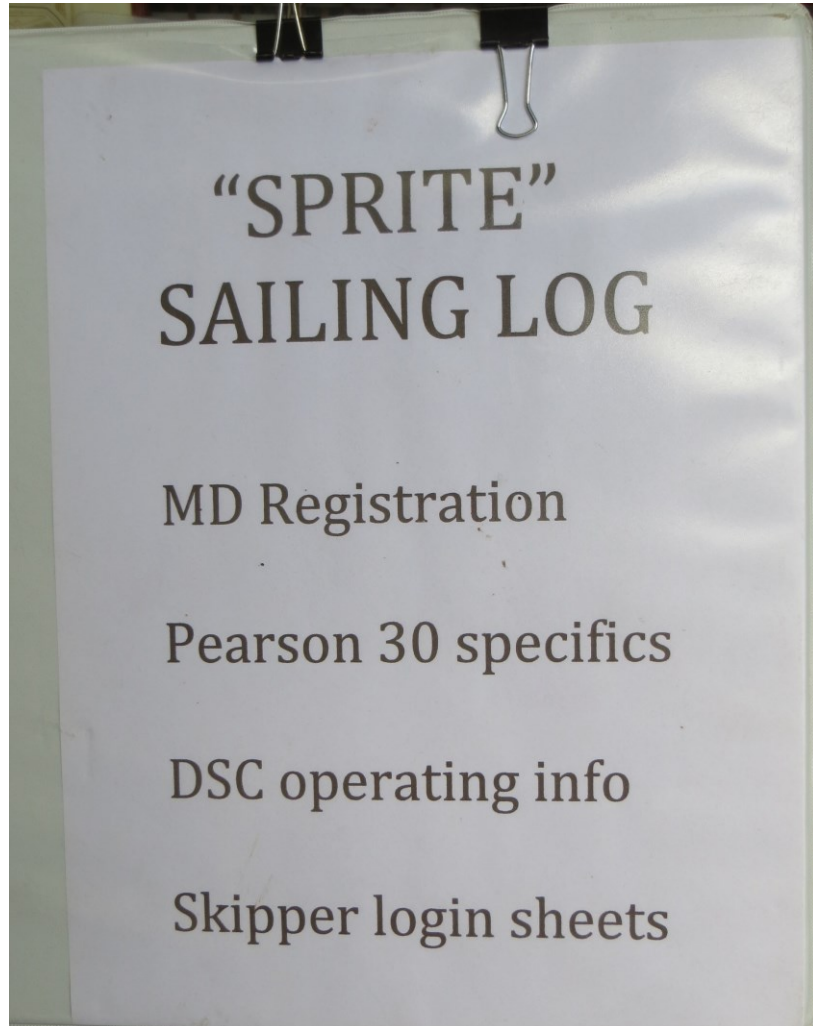
# Logbook

- Logbook located near sink. Information well worth reading.
- Specifications and Orientation information.
- Sign-in sheet
- Through hull fittings – location diagram

# Logbook



# Logbooks- Sailing & Maintenance



# Specifications & Orientation Information

- LOA 29.8 ft / LWL 25.0 ft
- Mast Height from DWL 42.25 ft
- Beam – 9.5 ft / Draft 5.0 ft



# Sign-in Sheet – 1<sup>st</sup> Page of Logbook

**Sprite**

Date \_\_\_\_\_

Departure \_\_\_\_\_ Arrival \_\_\_\_\_

Home Port \_\_\_\_\_ Destination \_\_\_\_\_

Skipper \_\_\_\_\_ Tel/email\* \_\_\_\_\_

First Mate \_\_\_\_\_ Tel/email\* \_\_\_\_\_

Weather \_\_\_\_\_ Wind \_\_\_\_\_

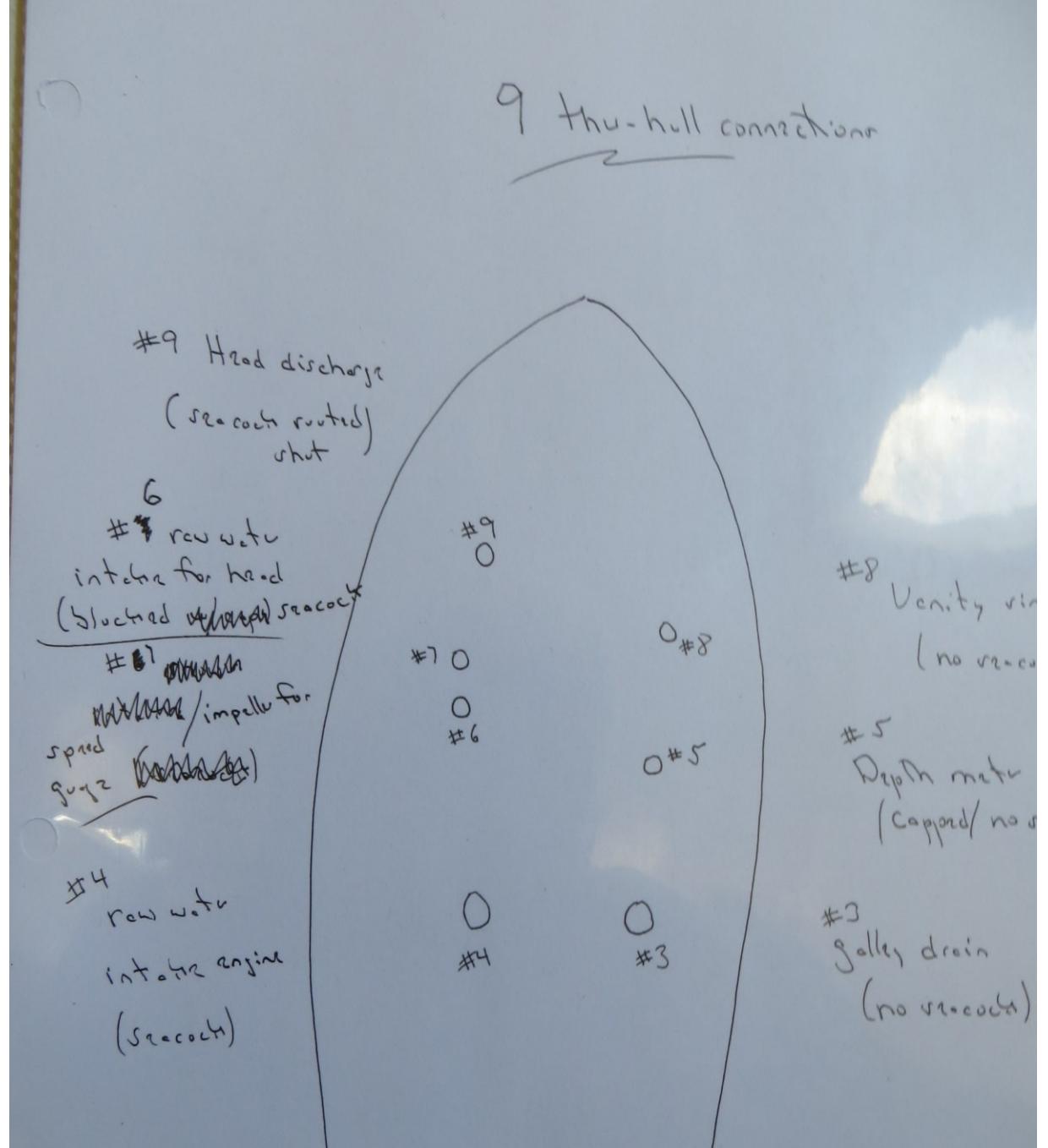
Other Crew: \_\_\_\_\_

Fuel Level \_\_\_\_\_ Engine hrs run \_\_\_\_\_

Life Sling removed/bilge pump on  
automatic/issues noted \_\_\_\_\_

**\*Report problems to boat manager - Pete Raynor at  
[cpraynor@gmail.com](mailto:cpraynor@gmail.com) or Martin Lutsky at  
[martinlutsky@hotmail.com](mailto:martinlutsky@hotmail.com)**

# Thru hull fittings - location diagram





# Lazarettes –

- Fuel Dip Stick –  
stern lazarette



# Lazarettes –

- Solar Panel – connection thru starboard lazarette



# Companionway- 1<sup>st</sup> step – what's there ?

- Deck Key –  
located top step



# Companionway- 1<sup>st</sup> step – what's there ?

- Other Emergency Items  
flares- horn - regs



# Fuel Check

- Deck key & fuel dip stick



## Down Below – interior

- Ignition Key – located on VHF radio cord
- First Aid Kit
- Fire Blanket
- Fire Extinguishers – two locations

# Below –

- Ignition Key –  
on VHF radio cord



# Below –

- First Aid Kit
- Fire Blanket





# Below – Fire Extinguishers – two locations



# Engine Start

- Battery Selector – set on #2 for start
- Insert & turn the key – horn will sound until engine starts
- Cockpit Instrument Panel – Throttle/ Glow Plug/ Start Button
- Check exhaust for water
- Kill switch location & operation

# Battery Selector – set on #2 for start



Insert & turn the key – horn will sound until engine starts



# Cockpit Instrument Panel – Throttle/ Glow Plug/ Start Button



# Electrical Panel

- VHF radio switch
- Nav Lights



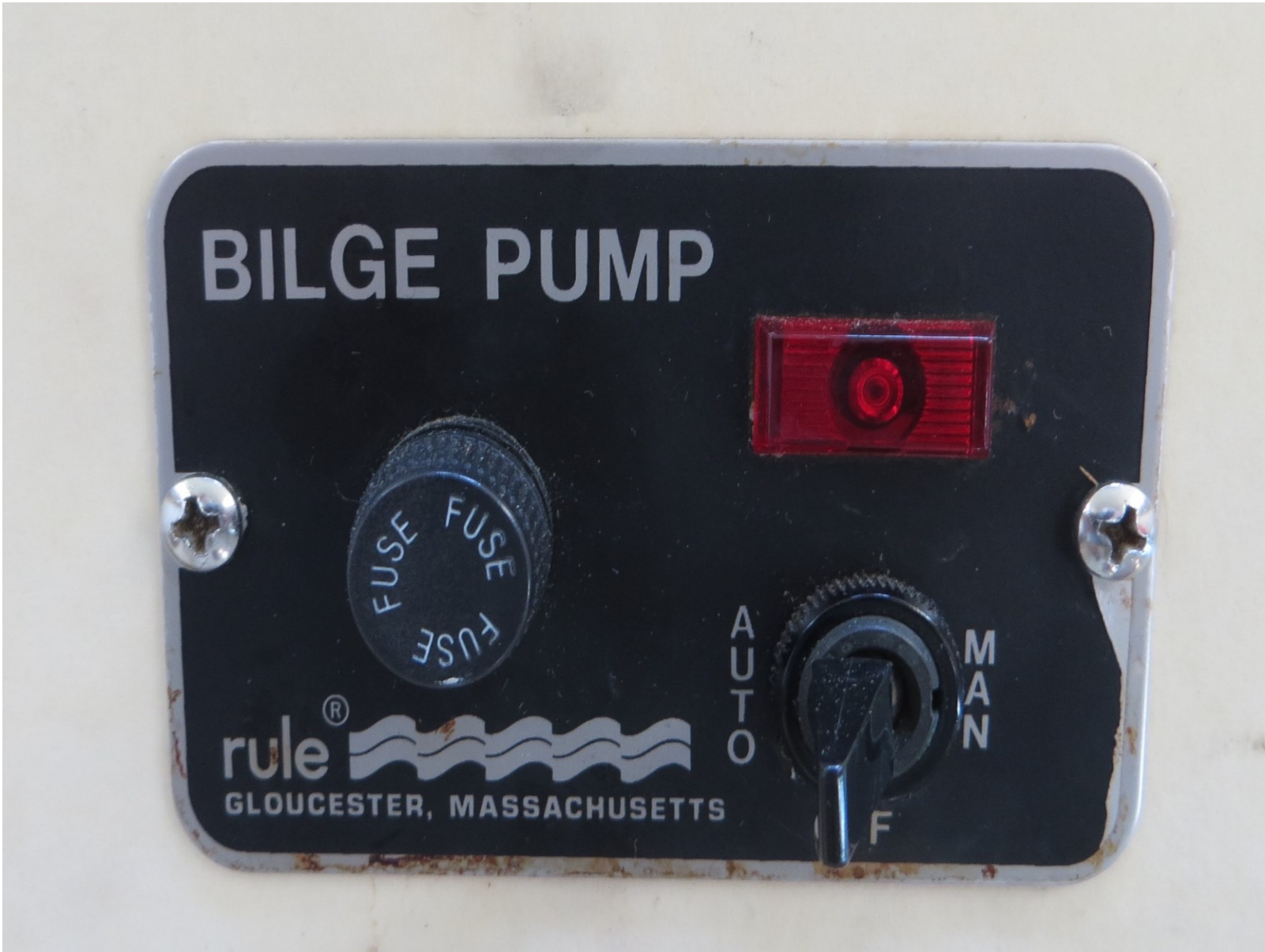
# Bilge

- Hatches –  
check bilge & bilge pump.
- Bilge pump to remain  
in automatic position.



# Bilge

- Bilge pump to remain in automatic position





# The “Head” — it does work

- Uses internal bladder water to fill & flush
- Y Switch - not to be moved.
- No bay water — seacocks are closed.



## Good to Known Information

- Small cockpit and large tiller. Initially consider limiting crew to four
- Rudder is “free-standing” – in reverse – hang-on tight. In reverse – good amount of prop walk to port.
- 150% genoa – in the right wind this will “control” the bow of the boat. Consider starting with 100% jib (or even with the shrouds)
- Roller furler – maintain tension with jib sheet when furling
- Large three-bladed propeller- need to be in neutral to slow down in both forward and reverse
- Swim ladder in V berth uses stern fittings- best for MOB recovery
- Anchor – lots of chain – deploy it lightly since it may be hard to retrieve

Small cockpit and large tiller.



Swim ladder in V berth uses stern fittings- best for MOB recovery



# Questions ??

