

## **Thursday Night Racing 2023**

The Downtown Sailing Center  
Baltimore, MD

### **Sailing Instructions**

The notation “[NP]” in a rule of the sailing instructions (SIs) means that a boat may not protest another boat for breaking that rule. This changes RRS 60.1(a). The notation “[DP]” indicates the rule is subject to discretionary penalty.

#### **RULES**

- 1.1 The series will be governed by the rules as defined in *The Racing Rules of Sailing* (RRS) for 2021-2024 with US Sailing prescriptions

#### **2 COMMUNICATIONS WITH COMPETITORS**

- 2.1 Notices to competitors will be posted on the DSC website located at <https://downtownsailing.org/racing/> and/or emailed to competitors as appropriate.
- 2.2 The race office consists of the Race Committee and Race Committee Bag (blue dry-bag).
- 2.3 On the water, the race committee intends to monitor and communicate with competitors on VHF channel 71.

#### **3 CHANGES TO SAILING INSTRUCTIONS**

- 3.1 Any change to the Sailing Instructions will be posted not later than 1800 (6 p.m.) on the day before it will take effect.
- 3.2 Changes to a sailing instruction may be made on the water prior to the warning signal for each race by broadcasting via VHF channel 71.

#### **4 CODE OF CONDUCT**

- 4.1 Competitors and support persons shall comply with reasonable requests from race officials.

#### **5 SIGNALS MADE ASHORE**

**5.1** No signals will be made ashore, except that the Race Committee may delay the start time due to inclement weather by announcing the postponement on VHF 71 and/or verbally notifying each skipper.

## **6 SCHEDULE OF RACES**

**6.1** Tentative schedule:

Series 1: Thursdays, April 27 through July 6, 2023

Gap week: No racing on Jul 13, 2023

Series 2: Thursdays, July 20 through September 28, 2023

**6.2** Final schedule will be announced by March 31, 2023.

**6.3** The scheduled time of the warning signal for the first race each day is 1800 (6 p.m.).

**6.4** No warning signal will be made within 30 minutes of sunset.

## **7 CLASS FLAGS**

**7.1** The class flag for each class (J/22 and Sonar) will be a flag displaying that class's sail insignia.

## **8 RACING AREAS**

**8.1** Racing Areas

- Alpha - Patapsco River north and west of Tide Point and east of Harbor View Tower
- Bravo - Patapsco River north and west of Fort McHenry and east of Broadway Pier
- Charlie - Patapsco River North of Fort McHenry (Canton Turning Basin)
- Delta - Patapsco River East of Fort McHenry, in the vicinity of mark 'FM' between the *Northwest Branch* and *Middle Branch*

**8.2** See Attachment 'A' for a diagram of the racing areas.

## **9 COURSES**

**9.1** All courses shall be windward-leeward courses, as illustrated in Attachment B. The Race Committee Boat shall display the course designation on its starboard side no later than the warning signal.

**9.2** Additional information about course and wind restrictions can be found in Attachment 'C', "*TNR RACE COMMITTEE GUIDELINES, COURSE REQUIREMENTS, AND WIND RESTRICTIONS.*"

## **10 MARKS**

**10.1** All marks will be drop marks:

- Rounding and gate marks (1, 2s, 2p) will be orange cylinders.
- The starting and finishing mark (S/F) will be an inflatable yellow teardrop
- A "Keep Off" buoy may be tied astern of the Race Committee Boat and shall be considered an extension of the Race Committee Boat.

## **11 OBSTRUCTIONS**

**11.1** The following area is designated as an obstruction: The area of the Patapsco River between Fort McHenry and the three (3) green buoys off its northeast shore: G "7" Q G; G "5" FI G 4s; G "3" Q G.

## **12 THE START**

**12.1** Races will be started according to the Audible-Signal Racing System, per RRS Appendix U. This changes RRS 26.

**12.2** The starting line is between a staff displaying an orange flag on the signal boat and the course side of the starting mark.

**12.3** [NP] [DP] Boats whose warning signal has not been made shall avoid the starting area during the starting sequence for other races.

**12.4** A boat that does not start within five (5) minutes after its starting signal will be scored Did Not Start without a hearing. This changes RRS A5.1 and A5.2.

## **13 CHANGING THE NEXT LEG OF THE COURSE**

**13.1** To change the next leg of the course, the race committee will move the original mark (or the finishing line) to a new position.

- If the direction and/or length of the leg will be changed, the signal shall be the display of flag C with repetitive sounds. No compass bearing, course board, or additional signal will be displayed. This changes RRS 33(a) and 33(b).

## **14 THE FINISH**

**14.1** The finishing line is between a staff displaying an orange flag on a race committee boat and the course side of the finishing mark.

## **15 PENALTY SYSTEM**

**15.1** RRS Appendix T applies.

**15.2** For the purposes of interpreting RRS 44.1(b), "serious damage" shall consist of any visible or structural damage.

**15.3** Any skipper and/or team found by the DSC to be liable for damages incurred during Thursday Night Racing shall receive a score of DNE, without a hearing, for that and all subsequent races until damages have been paid in full. This changes RRS 63.1 and A5.

## **16 TIME LIMITS**

**16.1** Time limits are as follows:

- Mark 1 time limit is 25 minutes. If no boat has passed Mark 1 within the Mark 1 time limit, the race will be abandoned.
- The race time limit is 45 minutes.

**16.2** Boats failing to finish within 15 minutes after the first boat sails the course and finishes will be scored Did Not Finish (DNF) without a hearing. This changes RRS 35, A4, and A5.

## **17 PROTESTS AND HEARING REQUESTS**

**17.1** For each class, the protest time limit is 40 minutes after the last boat in that class finishes the last race of the day or 20 minutes after the Race Committee docks, whichever is later.

**17.2** A protesting boat need not display a red flag. This changes RRS 61.1(a).

**17.3** Promptly following the completion of each race, a boat that intends to protest an incident in that race shall notify the Race Committee.

**17.4** Both parties—protestor and protestee—must fill out a Hearing Request Form. Hearing Request Forms are available from the Race Committee and at <https://downtownsailing.org/racing/>. This changes RRS 61.2.

**17.5** In the event of a protest, the Race Committee shall form a Protest Committee, comprised of two members of Race Committee and an impartial third member who is neither serving on race committee nor a member of either protest party.

**17.6** Parties that leave the premises before the protest hearing shall have the following penalties assigned without a hearing, unless SI 15.3 applies:

- Protesting parties will have their protest(s) disallowed;
- Protested parties will receive a score of DSQ for the race in which they were protested, unless the protest has been disallowed in accordance with this SI.

This changes RRS 63.1.

**17.7** As soon as practical after receiving forms from all parties, the Protest Committee will hold a “3 minute justice” hearing, comprised of the Protest Committee and a single representative from each party to the protest:

- Once the hearing has begun, the Protestor has one minute to explain the reason for his/her party's protest to the Protest Committee.
- The Protestee has one minute to explain his/her party's position.
- The Protest Committee shall dismiss the two competitors and will deliberate and reach a decision in 1 minute.
- Protest Committee will notify the protest parties of their decision and fill out the Hearing Decision Form, available from the Race Committee and at <https://downtownsailing.org/racing/>.

This sailing instruction changes the proceedings outlined in RRS Part 5 Section B. For details on the process, see SI Attachment E.

## **18 SERIES SCORING**

- 18.1** Each J/22 Class team must complete 1 night of Race Committee (RC) duty per series, as per the posted rotation schedule, in order to be scored for that series. Each team shall field a minimum of 4 people for RC.
- 18.2** A J/22 class team fulfilling their RC Duty shall be granted redress, without a hearing, for all races that night. Its redress score shall be the average, to the nearest tenth of a point, of its points in all races in the series. This changes RRS 63.1
- 18.3** For the J/22 Spinnaker Class, The Low Point scoring system of RRS Appendix A will apply for each series.
- 18.4** For the Sonar Non-Spinnaker Class: The Low Point scoring system of RRS Appendix A will apply for the entire calendar season; scoring is provisional only.
- 18.5** Series scoring for the J/22 Spinnaker Class:
- When fewer than ten (10) races have been completed, a team's series score will be the total of its race scores.
  - When from ten (10) to fourteen (14) races have been completed, a team's series score will be the total of its race scores excluding its worst score.
  - When fifteen (15) to nineteen (19) races have been completed, a team's series score will be the total of its race scores excluding its two (2) worst scores.
  - When twenty (20) or more races have been completed, a team's series score will be the total of its race scores excluding its three (3) worst scores.

## **19 SAFETY REGULATIONS**

- 19.1** [NP] [DP] Each boat shall check in prior to the start of the first race in which it competes each night by sailing by the signal boat and hailing its bow/sail number and the skipper on board.

**19.2** A boat that retires from a race and/or leaves the racing area prior to the last race shall notify the race committee as soon as possible.

**20 REPLACEMENT OF CREWS/SKIPPERS**

**20.1** [NP] [DP] For the J/22 class: Substitute skippers and/or crew, i.e. not part of the original registered team, may be allowed only at the discretion of the DSC.

**21 BOATS PROVIDED BY THE ORGANIZING AUTHORITY (DSC)**

**21.1** Boats will be supplied by the DSC. See Attachment D.

**22 ADVERTISING**

**22.1** A boat and its crew shall not display any advertising, as defined in World Sailing Advertising Code, Regulation 20.1.1, on competitors clothing, the boat, or sails without prior approval from the DSC. Boats failing to comply with this rule will be scored DNE without a hearing for all races started. This rule is intended to discourage corporate promotion or sponsorship that is not pre-approved by the DSC. This changes RRS A5.

**22.2** Boats may be required to display advertising chosen and supplied by the DSC, in accordance with World Sailing Advertising Code.

**23 DISCLAIMER OF LIABILITY**

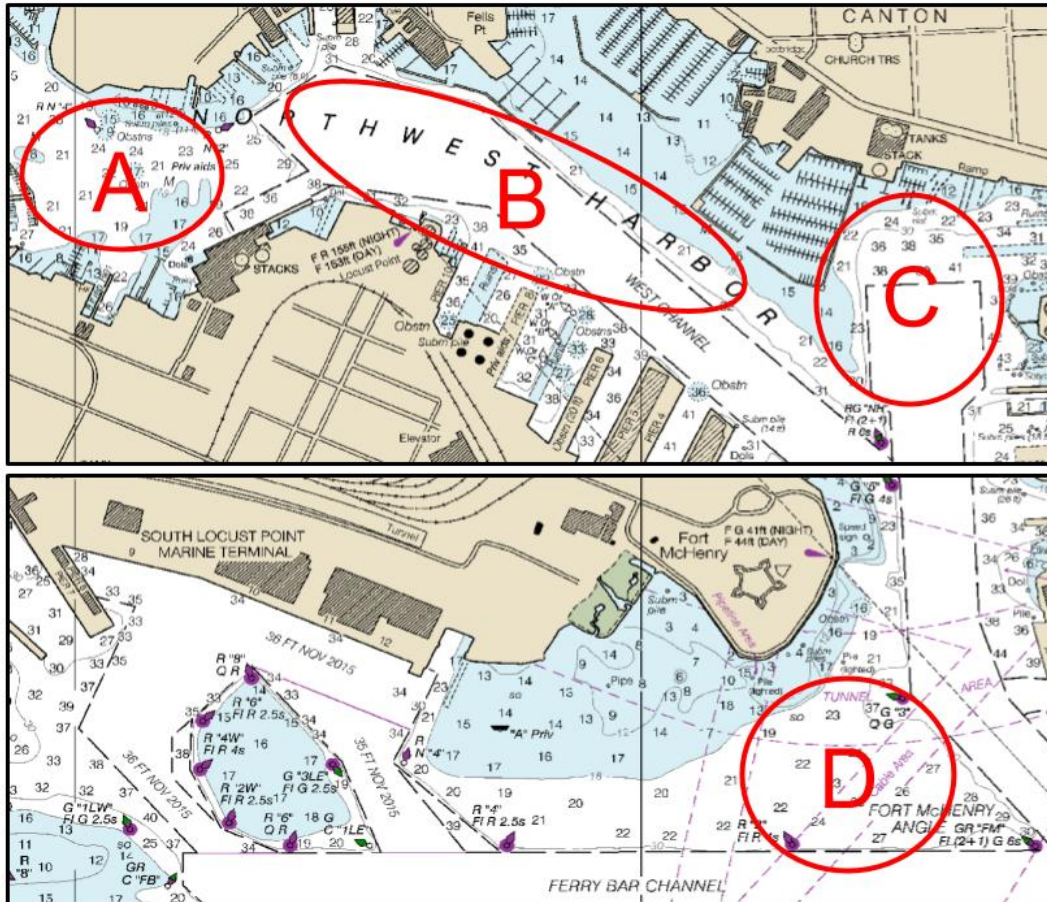
**23.1** Competitors participate in the regatta entirely at their own risk. See RRS 3, **Decision to Race**. The DSC or its agents will not accept any liability for material damage or personal injury or death sustained in conjunction with or prior to, during, or after the regatta.

**24 RIGHTS TO USE NAME AND LIKENESS**

**24.1** By participating in the Thursday Night Racing Series, competitors automatically grant to the DSC the right, in perpetuity, to make, use, and show, at its discretion, any photography, audio, and video recordings, and other reproductions of them made at the venue without compensation.

## Attachment A: Racing Areas

Course 'B' should be used sparingly and only at the discretion of the DSC on a per event basis.



**Course 'A':** Used primarily for NW winds and for early- and late-season racing

**Course 'B':** Used sparingly, only at discretion of DSC staff/PRO; NW & SE winds only

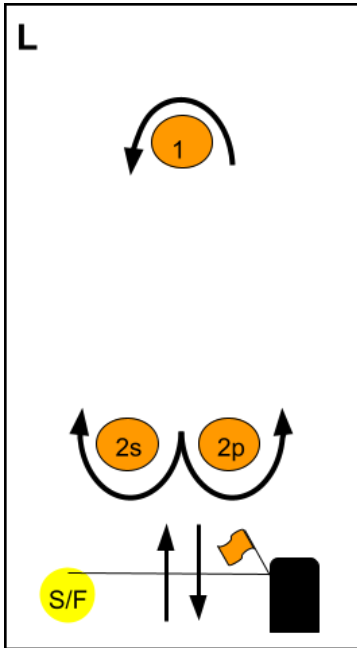
**Course 'C':** Primary TNR racing area; All wind directions

**Course 'D':** Used only during summer months; N, NE, E, SE, S, & SW winds

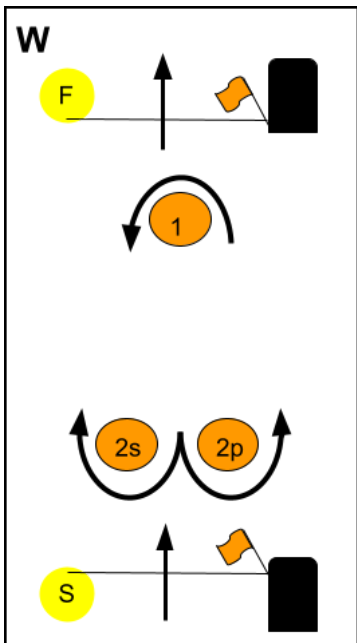
For more information concerning these venues, please consult NOAA Chart 12281.

## Attachment B: Course Diagrams

The Preferred Course for the J/22 Class is an L2. The preferred course for the Sonar Class is L1. J/22s shall not race course L1.



<b>Course L - Windward/Leeward, Leeward Finish</b>	
<i>Signal</i>	<i>Mark Rounding Order</i>
L1	Start - 1 - Finish
L2	Start - 1 - 2s/2p - 1 - Finish



<b>Course W - Windward/Leeward, Windward Finish</b>	
<i>Signal</i>	<i>Mark Rounding Order</i>
W2	Start - 1 - 2s/2p - Finish
W3	Start - 1 - 2s/2p - 1 - 2s/2p - Finish



## **Attachment C: Race Committee Guidelines, Course Requirements, and Wind Restrictions**

1. Races should not be started unless the wind speed is in excess of a three knot average (3.45 mph) for at least five (5) minutes in the starting area and--as best as Race Committee can determine--the rest of the course.

2. If average wind speed falls below three (3) knots for a sustained period of five (5) minutes during a race, the race shall be abandoned.

3. In races started when winds exceed 20 mph sustained, or when conditions dictate:

- Spinnakers shall not be used
- Mainsails shall be reefed
- All competitors shall wear PFDs

This shall be communicated over VHF channel 71

4. If average wind direction shifts 50 degrees in one direction sustained for a period of five (5) minutes during a race, the race shall be abandoned.

5. The length of the starting line shall be *at least* the combined length of all the J/22 Class boats or 30 seconds long, whichever distance is greater. For reference, a boat traveling at 4 kts will take approximately 37 seconds to travel 248' (= to 11 J/22 lengths). The recommended line length is 1.25-1.5 multiplied by the combined length of all the J/22 Class boats (14 - 17 boat lengths).

6. J/22 courses shall be one of the following courses according to Attachment 'B': L2; W2, W3. Courses may be shortened according to these Sailing Instructions.

7. Sonar courses shall be one of the following courses according to Attachment 'B': L1; L2; W2

## Attachment D: Boats supplied by the DSC:

- 1 Boats will be provided for all competitors, who shall not modify them or cause them to be modified in any way except that:
  - a compass may be tied or taped to the hull or spars;
  - wind indicators, including yarn or thread, may be tied or taped anywhere on the boat except the sails;
  - adhesive tape (except duct tape) may be used anywhere above the water line.
  - personal tiller extensions and sheets may be used as long as all DSC equipment is returned to its working order.
- 2 Hulls, keels, and rudders may not be cleaned below the waterline except at the discretion of the DSC.
- 3 Competitors shall report any damage or loss of equipment, however slight, to the DSC via the [online form](#) or by emailing the office.
- 4 All trash and personal items shall be removed from the boat at the end of racing each night.
- 5 A competing boat's mainsail and jib shall consist of the DSC-supplied sails rigged on each boat.
- 6 For J/22 Spinnaker Class boats, a competing boat's spinnaker and sheets shall conform to the one-design class rules for that boat. Sail number requirements shall not apply. Spinnakers, sheets, and twings are available for use from DSC with prior permission from the office.
- 7 J/22 class boats will be assigned according to the posted boat rotation schedule available here: <https://downtownsailing.org/racing/>
- 8 Sonar class boats shall be reserved on a first come, first serve basis. All DSC skipper requirements apply.
- 9 A team that fails to comply with any instruction in Attachment D shall receive, without a hearing, a score of DSQ for all races sailed in which the instruction was broken. This changes RRS 63.1.

## Attachment E: Protest Checklist

**Did a boat notify the Race Committee of a protest either by ANY of the following methods immediately following the race in which the incident took place:**

- Notification by VHF
- Verbal notification hailed on the water or on the docks

**Was the Protest Hearing Request Form received within the time limit: 40 minutes after the last boat in the class finishes the last race, or 20 minutes after the Race Committee docks, whichever is later.**

If “No” to any of the above: protest is invalid, no hearings will be held.

**If “Yes” to both of the above, proceed to the following steps:**

- 1. Both parties—protestor and protestee—must fill out a Hearing Request Form**
  - a. Available in Race Committee materials
  - b. Also: <https://downtownsailing.org/racing>
- 2. Race Committee must form a Protest Committee, made up of:**
  - a. Two members of Race Committee
  - b. One impartial third member who is not a member of either protest party
- 3. Before either team leaves for the night, hold a “3-minute justice hearing”**
  - a. Once the hearing has begun, the Protestor has one minute to explain the reason for his/her party’s protest to the Protest Committee.
  - b. The Protestee has one minute to explain his/her party’s position.
  - c. The Protest Committee shall dismiss the two competitors and will deliberate and reach a decision in 1 minute.
- 4. At the conclusion of the hearing, the Protest Committee may decide by simple majority:**
  - a. Determine there is not sufficient evidence any party broke a rule, and impose no penalty on either team
  - b. Assign a penalty of DSQ to any party that broke a rule
- 5. Protest Committee will notify the protest parties of their decision and fill out the Hearing Decision Form**
  - a. Available in Race Committee materials
  - b. Also: <https://downtownsailing.org/racing>

**Did either party leave the premises before the protest hearing?**

- 1. Assign the following penalties without hearing:**
  - a. Protesting parties will have their protest(s) disallowed
  - b. Protested parties will receive a score of DSQ for the race in which they were protested.
- 2. Fill out the Scoring Penalty and Hearing Decision Form**
  - a. Available in Race Committee materials
  - b. Also: <https://downtownsailing.org/racing>